

QUEST CHURCH

Excursion Tool Inhabiting the Stories of the Places We Live: What stories will you inhabit?



Guided by the following questions, let's examine through cultural exegesis how to read and understand a place by looking at what geography reveals:

- What are the stories that you hear about a place?
- What is the relationship between people's story and place?
- What is the relationship between reconciliation and place?

“HOW DO PHYSICAL LOCATIONS AND THE PLACES WE CREATE IN THOSE LOCATIONS, COMMUNICATE MEANING BEYOND THE STRUCTURES THEMSELVES?”

- David Leong, *Race and Place* (26)

Seattle Story: The places we inhabit

Land Acknowledgement:

Respect and Honor to the People of this Land...

We acknowledge that we are on unceded lands of Coast Salish people, the traditional home of all tribes and bands within the Duwamish, Suquamish, Tulalip, and

Muckleshoot nations. A people that are still here and continuing to honor and bring to light their ancient heritage and the land. We are grateful to the Coast Salish people, yet we understand that this acknowledgement is meaningful only when accompanied with action as well as appropriate reflection. We commit to using our positionality to decolonize the spaces we occupy and to center native people, ideas, and art as a means in which we all work toward reconciliation.



“EACH PERSON EFFECTIVELY RESHAPES A PLACE BY MAKING [THEIR] STORY A THREAD IN THE MEANING OF THE PLACE AND ALSO HAS TO COME TO TERMS WITH THE MANY LAYERS OF STORY THAT ALREADY EXIST IN A GIVEN LOCATION.”

- Phillip Sheldrake, *Spaces for the Sacred* (16)

QUESTIONS:

On whose land am I dwelling?
Who were the people here before me? What were their stories?

Remember Seattle's themes within the framework of development and displacement mentioned in the Seattle Story Highlight: name & claim, nature v. industry, wealth v. poverty

NAME & CLAIM

Land of the Duwamish, Suquamish and other coast-Salish Tribes



“THEY CAME HERE TO EXPLORE,
CHART AND CLAIM LANDS FOR THEIR COUNTRIES.
TO NAME A PLACE WAS TO CLAIM IT,
SO **THEY RE-NAMED NATIVE PLACES.**”

- MOHAI of the early colonizers to this region

QUESTIONS:

Where do we see presence and inclusion of Native people and culture in our city?
How are Native people still impacted by the treaties and exile from this land - from their land?

EXPLORE:

As you consider the spaces and places you daily inhabit, consider the stories of those who were here before you. What do you know of how they practiced life and engaged the land?

<https://suquamish.nsn.us/>
<https://www.duwamishtribe.org/>
<https://www.unitedindians.org/>
<https://www.realrentduwamish.org/>
<https://www.burkemuseum.org/>
firstnations.de/

VISIT:

[Pioneer Place Park](#) - an urban park with a few public artworks.

[Daybreak Star Indian Cultural Center](#) - located in Discovery Park in Magnolia's neighborhood.

[Burke Museum](#) (located on UW Campus) or hosted exhibits at [Seattle Art Museum](#)

NATURE v. INDUSTRY

EXPLORE:

There are several parts of Seattle's development and present that displaces natural landscapes for the sake of industry and access. So, exploring the stories on the place you live, it is important to reflect on the question *What is or has been done for the sake of industry?*

Taking in Seattle's diverse terrain and topography, it naturally structures itself around hills, water, and mountains. However historical regrades of Denny Hill and at Beacon Hill have filled some of the city's industrial areas and waterfronts and created passageways for transportation. There are manmade islands and canals that support industry.

Ultimately as a community, we want to look at what has been, what will be, and what can be done?

[Seattle Moves a Mountain: Story of Denny Regrade](#)
[Lake Washington Ship Canal](#)



QUESTIONS:

How does the built environment shape your experience? What are you noticing about boundaries or changes in our community? Where are places where industry and nature meet?

Where are roads and access leading to and coming from? What is being connected? Who/what is being bridged over and displaced?

What is the relationship of roads to the neighborhood and the impact of where they are located? What is their relationship within the larger city?

VISIT:

Ride the Light Rail through Seattle
Dr. Jose Rizal Bridge/12th Ave Bridge
Ballard Locks
MOHAI - Museum of History & Industry (South Lake Union)

"THE TIME WILL SOON BE HERE WHEN MY GRANDCHILD WILL LONG FOR THE CRY OF OF A LOON,
THE FLASH OF A SALMON, THE WHISPER OF SPRUCE NEEDLES, OR THE SCREECH OF AN EAGLE.
BUT HE WILL NOT MAKE FRIENDS WITH ANY OF THESE CREATURES AND WHEN HIS HEART ACHES
WITH LONGING
HE WILL CURSE ME. HAVE I DONE ALL TO KEEP THE AIR FRESH? HAVE I CARED ENOUGH ABOUT THE
WATER?
HAVE I LEFT THE EAGLE TO SOAR IN FREEDOM? HAVE I DONE EVERYTHING I COULD TO EARN MY
GRANDCHILD'S FONDNESS?"

- Chief Dan George, actor and chief of the Tsleil-Waututh Nation - Coast Salish people in Burrard Inlet, British Columbia

WEALTH v. POVERTY

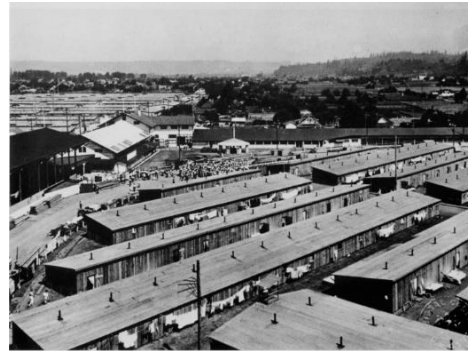


EXPLORE:

As we look to explore what it means to inhabit a place faithfully, we must confront realities about its' historical and systemic impact. Seattle like most major cities in the US expends a history of practices and policies used to maintain intergenerational wealth and power - often at the exclusion of people of color, immigrants, and refugees. These include:

- Native residential ban in the original township
- The Tacoma Method, exile with the Chinese Exclusion Act of 1882
- Imprisonment of thousands of Japanese at Camp Harmony with Executive Order 9066 in 1942 - Puyallup Fair Grounds
- The boundaries of Lake Washington ship canal has become a figurative & physical barrier creating the division w/in segregated Seattle, w/ a more white population N of the canal and people of color south b/c of real estate & neighborhood practices like redlining, restrictive covenants.

<https://www.tacomamethod.com/>
[Densho Encyclopedia - Camp Harmony](https://densoencyclopedia.com/camp-harmony)
[UW Seattle Civil Rights & Labor History Project](http://uwseattlecivilrights.org/)
<http://allhomekc.org/>



VISIT:

The Bridge Care Center

Seattle's Central District & the African American Museum

Beacon Hill along Beacon Ave

International District & the Wing Luke Museum

Tacoma Reconciliation Park

[“Song of the Earth”](#) - mural honoring Japanese American Farmers at Pike Place Market

“SEATTLE IS CURRENTLY IN ANOTHER “BOOM PERIOD,” FUELED LARGELY BY A TECH INDUSTRY THAT ATTRACTS HIGH-INCOME EARNERS, LARGE CORPORATIONS, LUXURY DEVELOPERS AND SPECULATIVE REAL ESTATE INVESTORS. AS HOUSING PRICES AND LAND VALUE INCREASE, COMMUNITIES OF COLOR ARE PUSHED OUT OF THE VERY NEIGHBORHOODS THEY WERE REDLINED INTO. THE CENTRAL DISTRICT IS PREDICTED TO BE LESS THAN 10% AFRICAN AMERICAN WITHIN JUST A FEW YEARS.”

- Wing Luke Museum, 2020 Redlining exhibit

“Seek the peace and prosperity of the city to which I have carried you into exile. Pray to the Lord for it, because if it prospers, you too will prosper.” - Jeremiah 29:7

QUESTIONS:

How have you located your life residentially, socially, and vocationally?

- What is your family's migration story? What is your American dream?
- Think about where you grew up. How hard or easy was it for you to live there? Do you consider it home?
- Where do you live now? Are you new to where you live? Would you have been able to live where you do 20, 40, 60 years ago?
- How have things changed to make it easier or harder for you to live there? For others?

Within your community / neighborhood, where and/or what are the borders and boundaries?

- Were there racial restrictive covenants for your neighborhood?
- Where do people congregate? Where do people seem divided?
- What's your sensory experience of the neighborhood?
- What do you notice about buildings and signage? What symbolic meaning is below the surface?
- How does your neighborhood compare to others nearby or in Seattle?



“We must go back to reclaim our past so we can move forward, so we can understand why and how we came to be who we are today.”

- Seattle Sankofa's Art

“THE IDENTITIES BEING FORMED IN THE SPACE OF COMMUNION MAY BECOME A DIRECT CHALLENGE TO THE GEOGRAPHIC PATTERNS FORCED UPON PEOPLES BY THE CAPITALISTIC LOGIC OF REAL ESTATE. WE WHO LIVE IN THE NEW SPACE OF JOINING MAY NEED TO TRANSGRESS THE BOUNDARIES OF REAL ESTATE, BY BUYING WHERE WE SHOULD NOT AND LIVING WHERE WE MUST NOT, BY LIVING TOGETHER WHERE WE SUPPOSEDLY CANNOT, AND BEING IDENTIFIED WITH THOSE WHOM WE SHOULD NOT... FOR US IN THE RACIAL WORLD, THE REMADE WORLD, A CRUCIAL POINT OF DISCIPLESHIP IS PRECISELY GLOBAL REAL ESTATE... THE STORY OF RACE IS ALSO THE STORY OF PLACE.” (36-37, *Race and Place* (Leong))

- Dr. Willie Jennings, *The Christian Imagination: Theology and the Origins of Race*

ADDITIONAL RESOURCES

Quest Seattle Story Highlight Presentation, Reconciliation Ministry Team & Caenisha Warren
Race and Place: How Urban Geography Shapes the Journey to Reconciliation, Dr. David Leong, 2017

History Link - historylink.org

Quest Church [Faith & Race Resources](#)

Quest Church [Regional Zones](#)

People - hear stories from the relationships you have in your community/city, experiences of store owners and community leaders, build new relationships, etc.

ADDITIONAL PLACES TO VISIT

Nordic Heritage Museum - Ballard

Sea Mar Museum of Chicano/a/Latino/a Culture - South Park

[La Resistencia](#) - fighting for closure of Northwest Detention Center, Tacoma, WA

Seattle Sankofa Art - Central District at Mt. Zion Baptist Church

Washington State Fair Grounds (Puyallup, formerly Camp Harmony)

[Seattle's cultural festivals](#)

ACTIVITY OPTIONS



Neighborhood Map

Activity for children & the creative

Create or copy a map of your neighborhood/community/regional zone. Use this to draw markers for what you see and explore as you investigate the stories within your area. You can identify and include landmarks, major intersections, organizations, retail, and industry. You can write a word or brief descriptor that reflects something you have learned about these places that you identify on your map.